



# OPTIFLOW

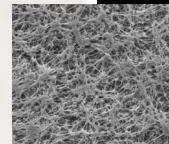
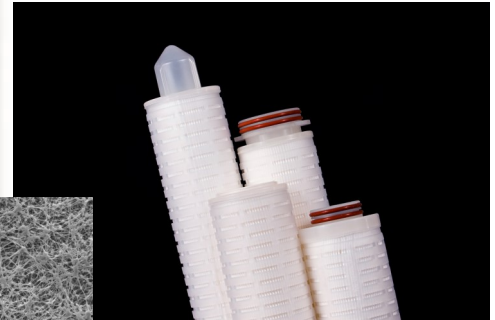
## PTFE MEMBRANE FILTER CARTRIDGE

Hydrophobic PTFE ~ High temperature ~ Gas & Air  
Pharmaceutical Grade

These filter cartridges are manufactured with a hydrophobic PTFE membrane, polyphenylsulfide polymer support and drainage layers.

They are specially designed for the sterile filtration of air, gas and vent at critical high temperatures and ozonized-water venting applications.

Available with a double-layer media.



### FEATURES AND BENEFITS

- Designed for water Intrusion Testing (no alcohol required)
- Oxidation-resistant materials of construction provide longer service life in hot air and vent applications
- Exceptionally high flow rates with low pressure drops
- Strong construction offers enhance steam resistance
- Laser-etched part/serial number and 2D matrix code are available for easy tracking

### TYPICAL APPLICATIONS

- Autoclave
- Fermentation Inlet Air
- Aseptic package / blow-fill-seal (BFS)
- Hot Water for injection (WFI) Tank Vents
- Oxygen-enriched Fermentation Air

### QUALITY STANDARDS

- All materials used meet the requirements non fiber-releasing per Title 21 of the U.S. Code of Federal Regulations (CFR)
- Component material were tested and meet the criteria for the USP class VI biological test for plastics
- Tested with *B. diminuta* (ATCC 19145) at  $>10^7$ - $10^{10}$ cm<sup>2</sup>( $>99.99999\%$ ) and meet GMP standards for sterilizing-grade filter requirements
- Manufactured under a quality management system certified to ISO 9001:2008

### TECHNICAL SPECIFICATIONS

#### CARTRIDGE DIMENSIONS

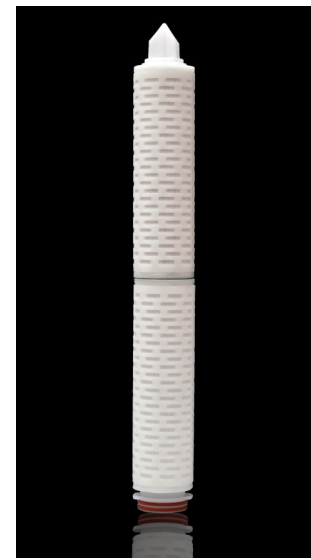
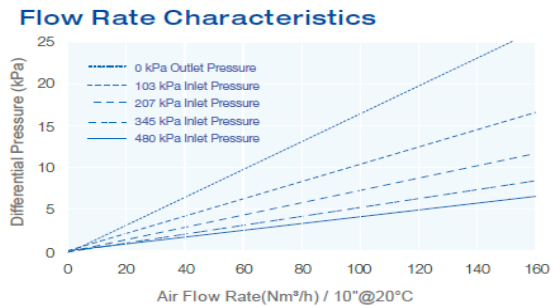
- Length: 5"/127mm 10"/254mm 20"/508mm 30"/762mm  
40"/1016mm

#### MATERIALS OF CONSTRUCTION

- Filter media: Hydrophobic Polytetrafluoroethylene (PTFE) membrane
- Support/Drainage layers: Polyphenylene sulphide (PPS)
- Core/Cage/End caps: Polypropylene
- Internal adaptor/ Reinforcing ring: PBT (Polybutylene terephthalate)
- O-rings: Silicone, EPDM, Viton, PFA/Viton, PTFE.

## EFFECTIVE FILTRATION AREA (EFA)

- 0.68 m<sup>2</sup> -10" (254 mm)



OPERATING CONDITIONS	
Max. operating temperature	80°C
Max. Differential pressure	6.9 bar at 25°C
	4.0 bar at 60°C
	2.4 bar at 80°C
Reverse	3.0 bar at 25°C
	1.0 bar at 80°C
Steam sterilization	30 min a 145°C (forward) <0.3 bar 100 cycles (reverse) <0.1 bar 50 cycles
Autoclave	400 cycles for 30 minutes at 130°C

INTEGRITY TEST PARAMETERS			
PTFH (single layer)	Water Intrusion Test (WFT/WIT)	10"	≤ 0.53ml/min @ 2.5 bar at 20°C
	Bubble Point		≥ 0.11MPa (60%/40%, IPA/Water) at 20°C
	Diffusion Flow		≤ 16.0 ml/min/10" @ 80kPa (60%/40%, IPA/Water)
PTFH-D (double layer)	Water Intrusion Test (WFT/WIT)	5"	≤ 0.16ml/min @ 2.5 bar
		10"	≤ 0.33ml/min @ 2.5 bar

## ORDERING INFORMATION

P	PTFH							
LAYER	LENGTH	MICRON	END CAP (inf)	END CAP (sup)	GASKETS	END CAP INSERT		
(Blank) - Single	05 - 5"/125mm	0.01 - 0.01µm	B - DOE with Gaskets	B - DOE with Gaskets	S - Silicone	(Blank) - No insert		
D - Double	10 - 10"/254mm	0.20 - 0.2µm	C - 226	F - Flat	E - EPDM	P - PBT		
	20 - 20"/508mm		D - 222	S - Spear	V - Viton	S - St. St.		
	30 - 30"/762mm		E - 222 Sartorius (3 tabs)					
	40 - 40"/1016mm		J - Junior 214					
			K - Junior 216					

DISTRIBUIDO POR:



Telf. 977 653135 – info@multifiltro.com

www.multifiltro.com

